



Cumbria County Council  
**Social Enterprise  
and the Council Plan**

# CSEP Programme

## January 2017 – to date

### **1-2-1 Business Support provided to:**

- 33 new SE start-up businesses – Community Interest Companies, Charitable Incorporated Organisations, Community Benefit Society
- 52 existing SE businesses

### **SE Networking Events:**

- 3 Conferences
- 10 Workshops & Network events
- 2 Webinars



**Our vision is to be:**  
“A Council that works with residents, businesses, communities and other organisations to deliver the best services possible within the available resources.”

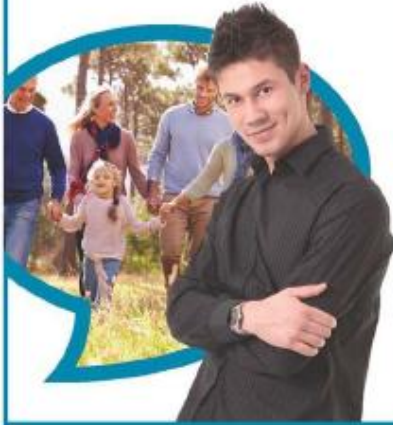
# Medium Term Financial Plan

## Financial Sustainability



# Outcomes for the people of Cumbria

**People in  
Cumbria are  
healthy  
and safe**

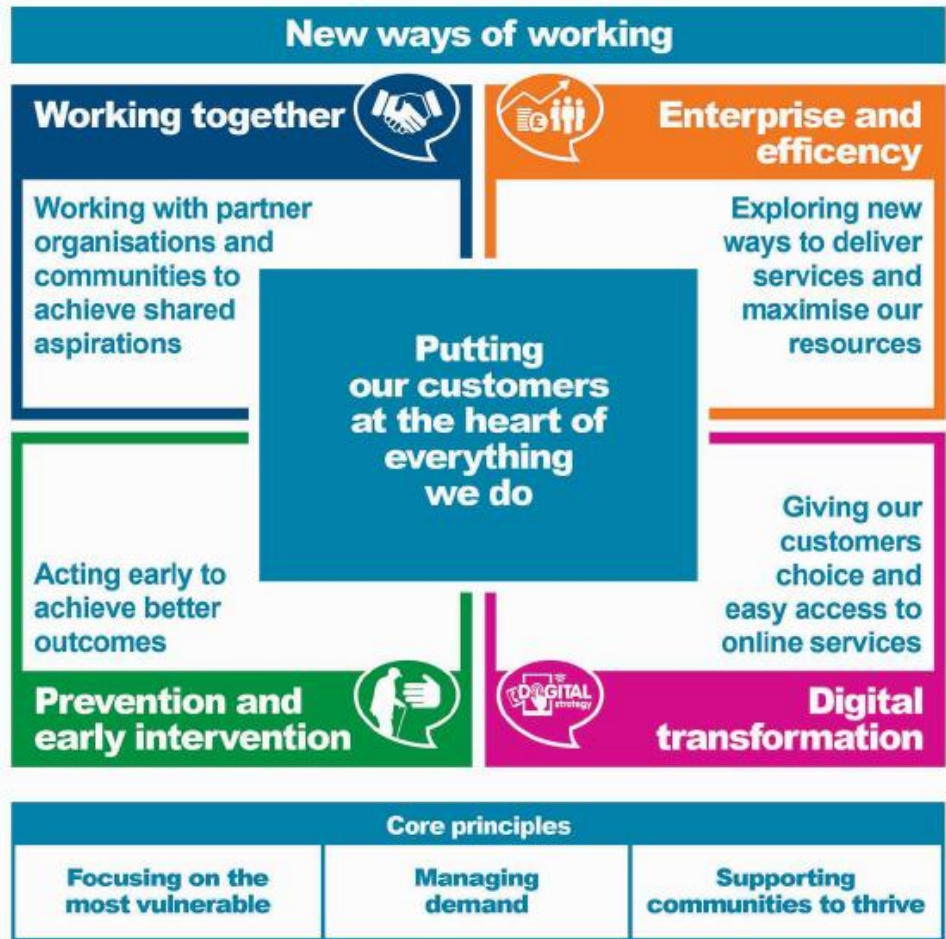


**Places in  
Cumbria are  
well-connected  
and thriving**




**The economy  
in Cumbria  
is growing and  
benefits  
everyone**






Cumbria County Council



Council Plan 2018-22

**Places in Cumbria are well-connected and thriving**



Serving the people of Cumbria [cumbria.gov.uk](http://cumbria.gov.uk)

Cumbria County Council




Council Plan 2018-22

**The economy in Cumbria is growing and benefits everyone**



Serving the people of Cumbria [cumbria.gov.uk](http://cumbria.gov.uk)

Cumbria County Council



Council Plan 2018-22

**People in Cumbria are healthy and safe**



Serving the people of Cumbria [cumbria.gov.uk](http://cumbria.gov.uk)

# Our conversation ...

- The context we are now working in
- Working differently to create our future
- What the future looks like to me





# Creating our future



# Benefits

- Puts the customer/people at the heart of the organisation
- A simplified way of providing services
- Removes organisational barriers
- Embeds a more 'joined up' way of working
- Provides more leadership and not just more management



# Benefits



- Introduces Strategic Agility
- Introduce a dynamic and flexible way of working
- Enhances entrepreneurship, accountability and innovation throughout
- Empowers individual employees to make decisions

# What will our new model deliver



# Expectations of ways of working

We will

- collaborate more and be outwardly focussed

It will enable

- Strategic leadership from the Executive Directors
- Day to day delivery lead by the Assistant Directors
- A learning organisation....



# Going forward

- Tender for a new contract to start April 2019
- Link to Council Plan and emerging priorities and strategies
- Form links with other sectors and explore Corporate Social Responsibility

Martin Allman

Economic Programmes Manager

07973 811179

[martin.allman@cumbria.gov.uk](mailto:martin.allman@cumbria.gov.uk)



Serving the people of Cumbria